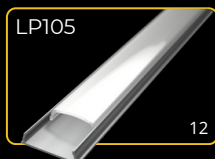
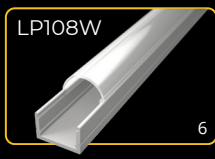
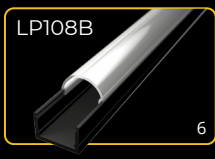
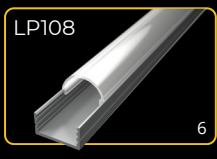
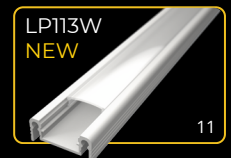
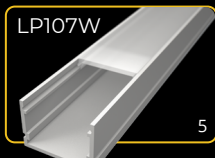
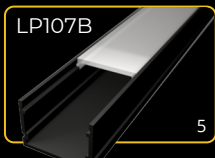
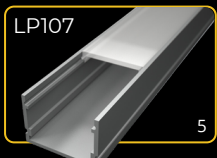
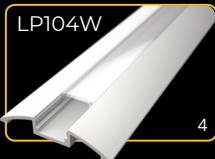
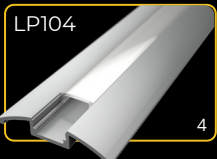
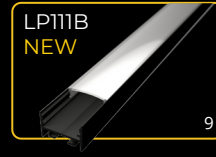
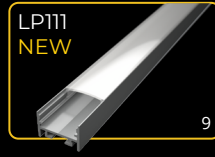
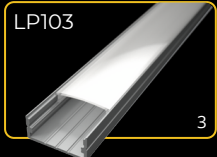
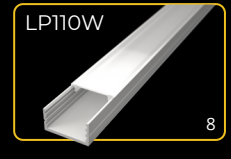
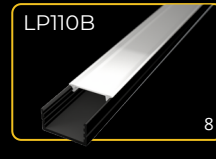
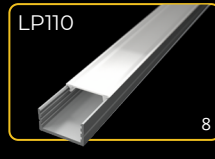
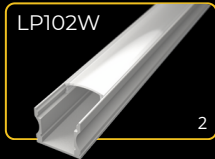
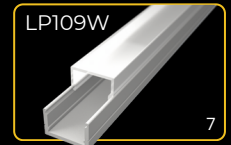
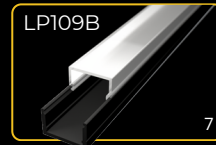
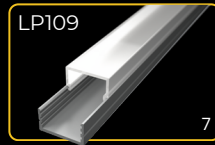
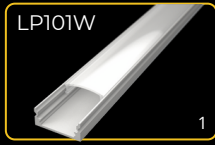
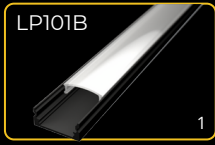
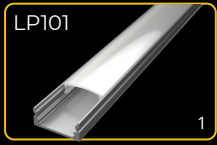
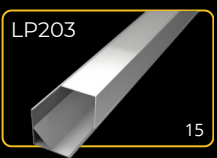
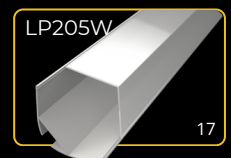
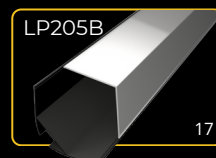
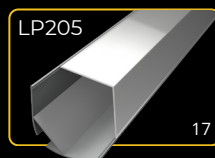
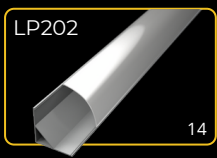


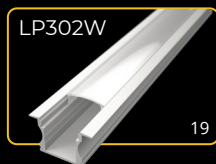
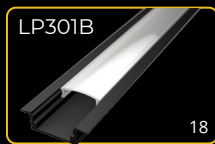
SURFACE PROFILES



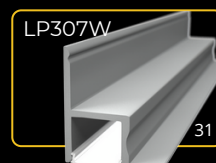
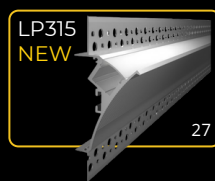
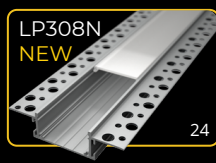
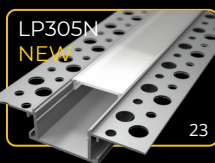
CORNER PROFILES



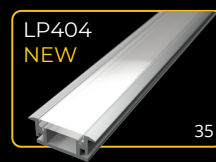
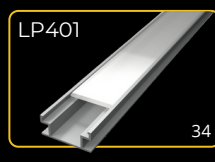
RECESSED PROFILES



PLASTERBOARD PROFILES



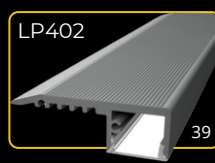
TILE PROFILES

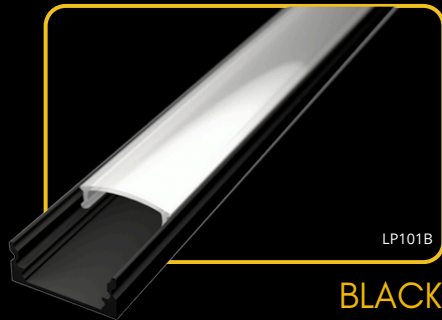


WALL PROFILES

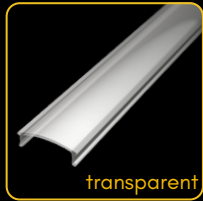


STAIR PROFILES





covers



2m LP-UNICOV1-MLK

LP-UNICOV1-TRA

LP-UNICOV1-BLK

LP-UNICOV1-MLK-UV

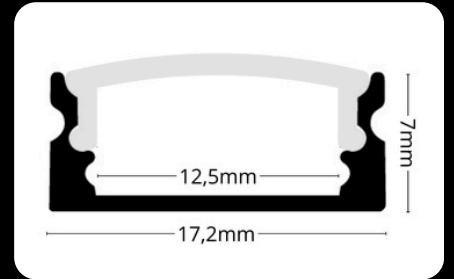
1m LP-UNICOV1-MLK-1m

LP-UNICOV1-TRA-1m

LP-UNICOV1-BLK-1m

LP-UNICOV1-MLK-1M-UV

20m LP-UNICOV1-MLK-20m



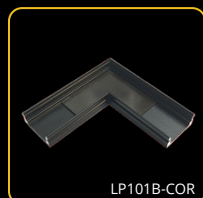
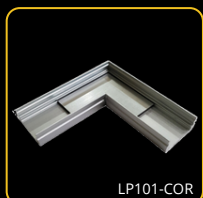
endings



clips

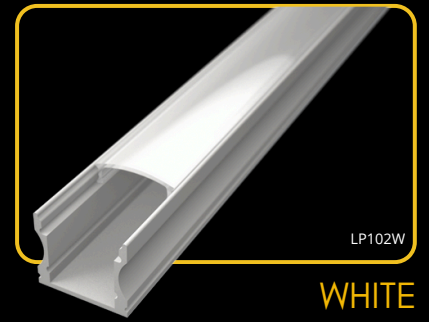


connectors

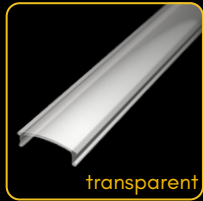


The **LED profile SURFACE 1** is our best-selling aluminum profile designed for surface installation. It is the perfect choice for a wide range of applications, offering an elegant and modern look. This profile is compatible with various diffusers, allowing you to customize lighting effects to suit your needs.





covers



2m LP-UNICOV1-MLK

LP-UNICOV1-TRA

LP-UNICOV1-BLK

LP-UNICOV1-MLK-UV

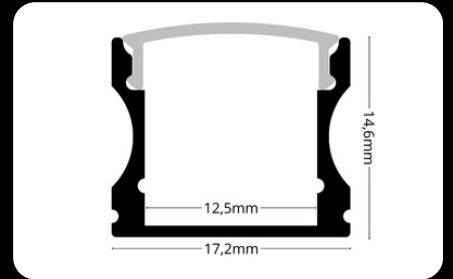
1m LP-UNICOV1-MLK-1m

LP-UNICOV1-TRA-1m

LP-UNICOV1-BLK-1m

LP-UNICOV1-MLK-1M-UV

20m LP-UNICOV1-MLK-20m

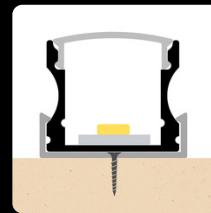


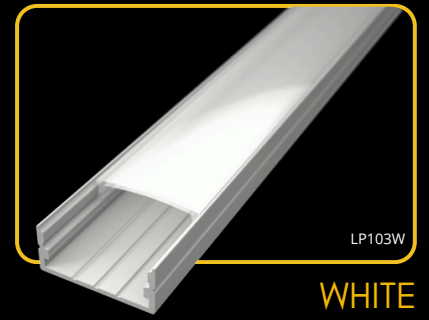
The **LED profile SURFACE 2** is a surface-mounted profile compatible with milky, transparent, and black diffusers. It provides versatile lighting options, making it suitable for various interior applications. Its sleek and durable design ensures a professional finish and long-lasting performance.

endings

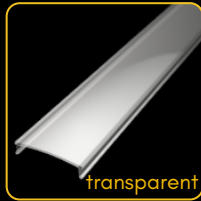


clips





covers



2m LP-UNICOV2-MLK

LP-UNICOV2-TRA

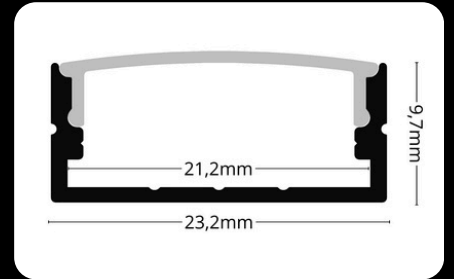
LP-UNICOV2-BLK

1m LP-UNICOV2-MLK-1m

LP-UNICOV2-TRA-1m

LP-UNICOV2-BLK-1m

20m LP-UNICOV2-MLK-20m

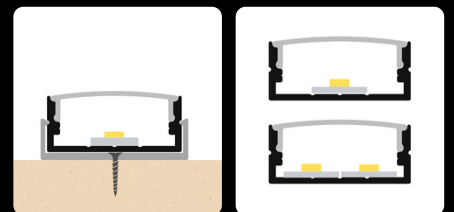


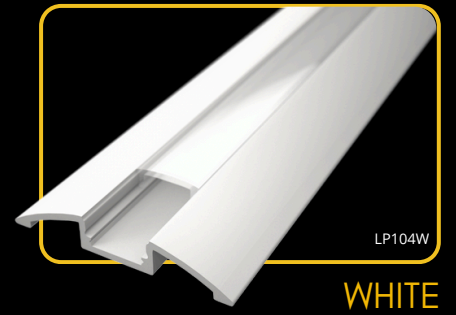
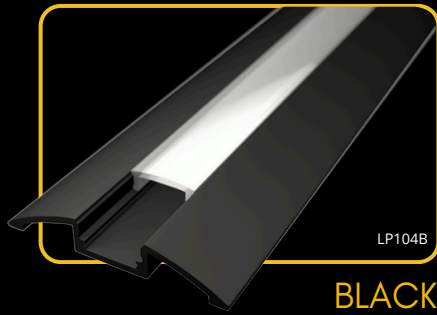
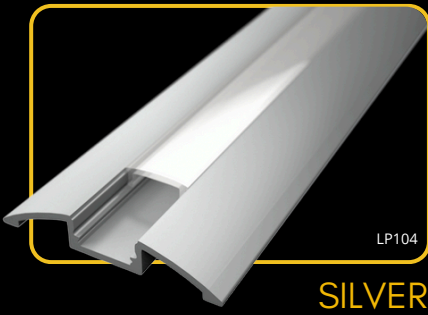
The **LED profile SURFACE 3** allows for the installation of up to two LED strips side by side, offering greater lighting output and flexibility. It is compatible with all types of diffusers, including milky, transparent, and black, making it a versatile choice for various lighting designs.

endings

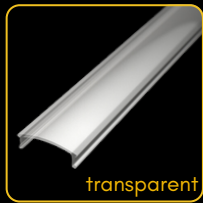


clips





covers

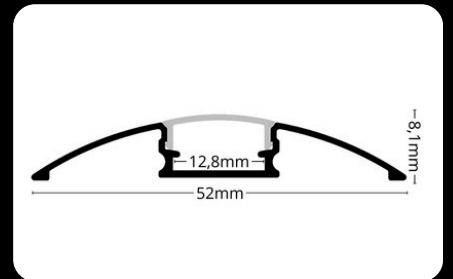


2m LP-UNICOV1-MLK
1m LP-UNICOV1-MLK-1m
20m LP-UNICOV1-MLK-20m

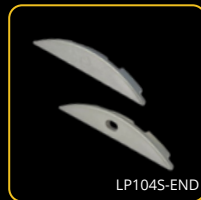
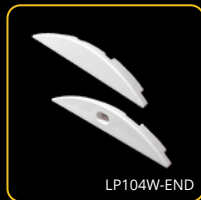
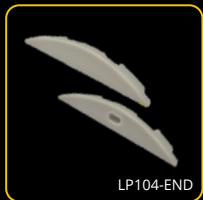
LP-UNICOV1-TRA
LP-UNICOV1-TRA-1m

LP-UNICOV1-BLK
LP-UNICOV1-BLK-1m

LP-UNICOV1-MLK-UV
LP-UNICOV1-MLK-1M-UV



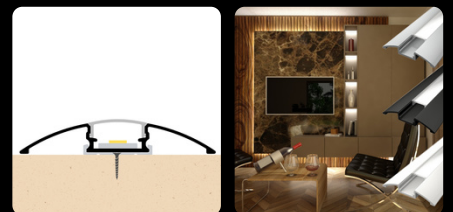
endings

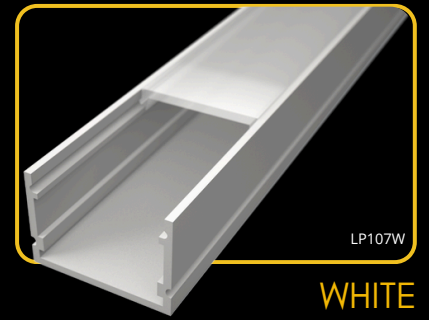
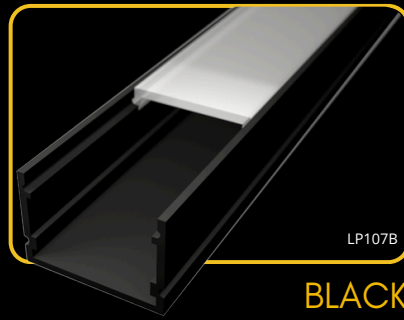


clips

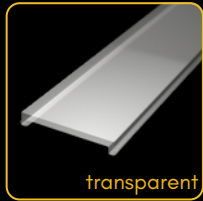
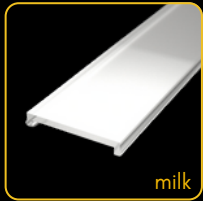


The **LED profile SURFACE 4** is a surface-mounted aluminum profile designed for creating clean and professional lighting installations. It features a modern and durable design, perfect for enhancing both residential and commercial spaces. Compatible with a wide range of LED strips and diffusers (milky, transparent, black), it provides flexible lighting solutions tailored to your needs. Ideal for achieving sleek, contemporary lighting effects.





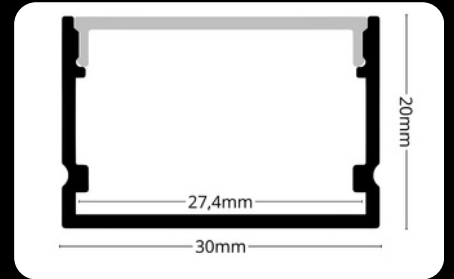
covers



2m LP107-MILKC
1m LP107-MILKC-1m

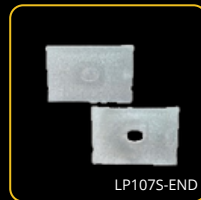
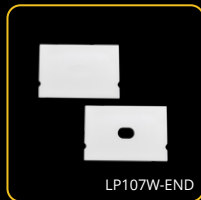
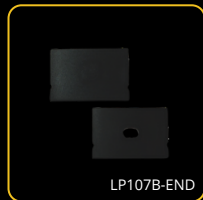
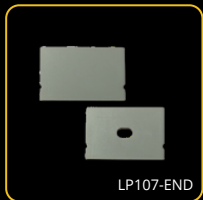
LP107-TRANC
LP107-TRANC-1m

LP107-BLACKC
LP107-BLACKC-1m

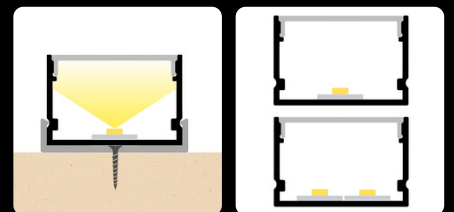


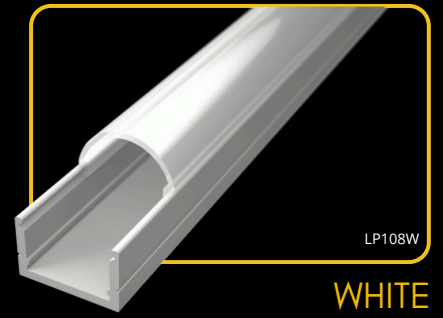
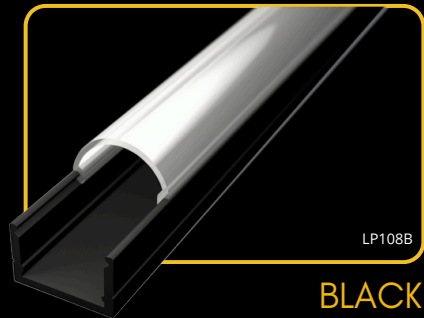
The **LED profile SURFACE 7** is a surface-mounted profile designed to accommodate one or two LED strips side by side. Its robust body ensures excellent heat dissipation for the LED strips, enhancing their performance and lifespan. With dimensions of 30x20mm, it provides a solid and professional solution for high-quality lighting installations.

endings

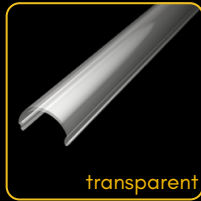


clips





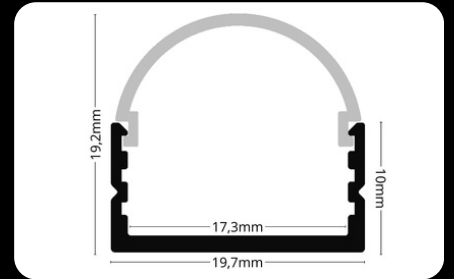
covers



2m LP108-MILKC
1m LP108-MILKC-1m

LP108-TRANC
LP108-TRANC-1m

LP108-BLACKC
LP108-BLACKC-1m



endings

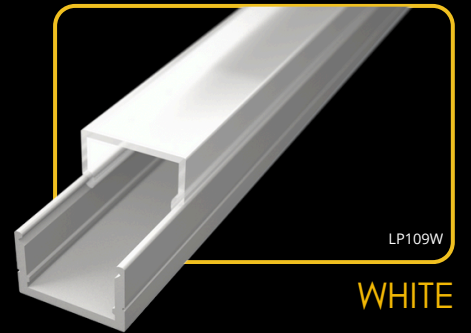
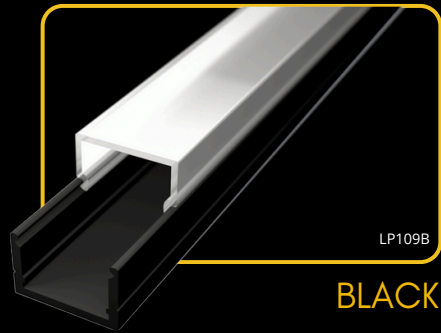
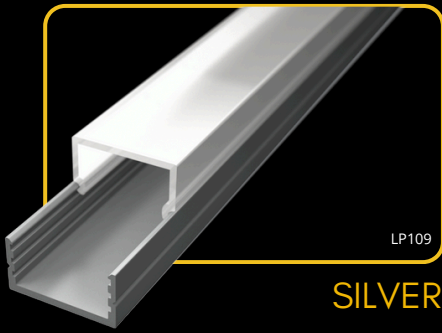


clips

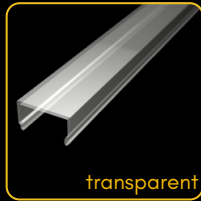
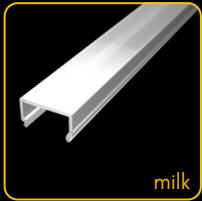


The **LED profile SURFACE 8** features a stylish curved diffuser that ensures excellent light diffusion, creating a soft and uniform lighting effect. Its elegant design makes it ideal for modern interiors, combining functionality with aesthetic appeal. Perfect for various surface-mounted lighting applications.

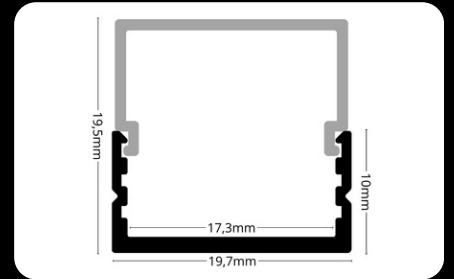




covers



2m	LP109-MILKC	LP109-TRANC	LP109-BLACKC
1m	LP109-MILKC-1m	LP109-TRANC-1m	LP109-BLACKC-1m



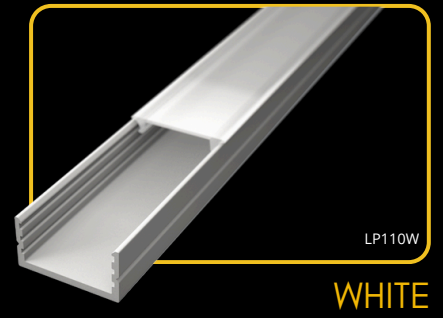
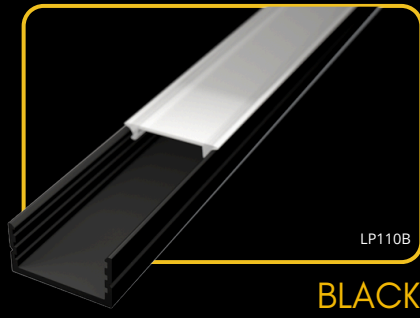
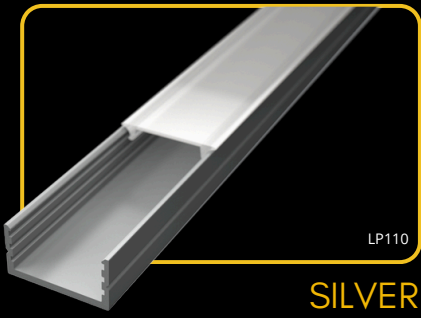
The **LED profile SURFACE 9** is a surface-mounted profile with a square diffuser, available in milky, transparent, or black versions. It offers a clean and modern look, making it ideal for various lighting applications while allowing you to customize the lighting effect to your needs.

endings

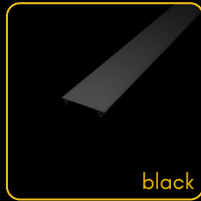
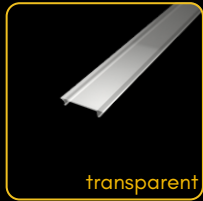


clips





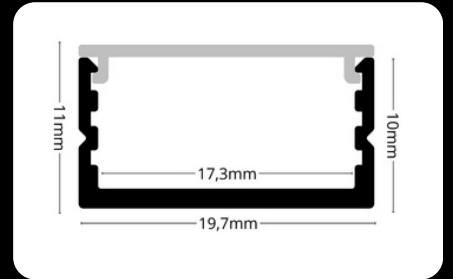
covers



2m LP110-MILKC
1m LP110-MILKC-1m

LP110-TRANC
LP110-TRANC-1m

LP110-BLACKC
LP110-BLACKC-1m



endings

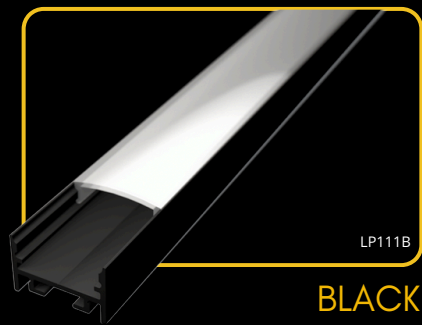


clips

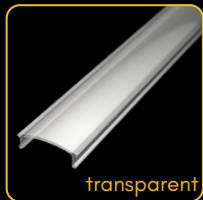


The **LED profile SURFACE 10** features a flat diffuser and offers versatile usage. It can be used as a surface-mounted profile or recessed, making it suitable for a wide range of lighting applications. Its adaptability and clean design make it a perfect choice for modern interiors.





covers



2m LP-UNICOV1-MLK

LP-UNICOV1-TRA

LP-UNICOV1-BLK

LP-UNICOV1-MLK-UV

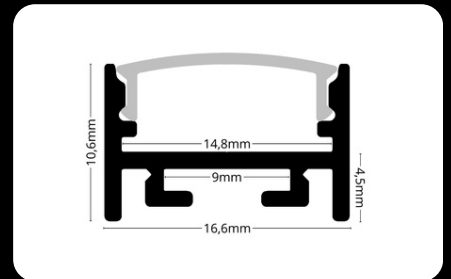
1m LP-UNICOV1-MLK-1m

LP-UNICOV1-TRA-1m

LP-UNICOV1-BLK-1m

LP-UNICOV1-MLK-1M-UV

20m LP-UNICOV1-MLK-20m



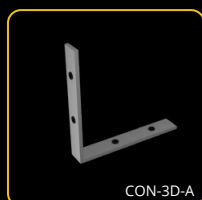
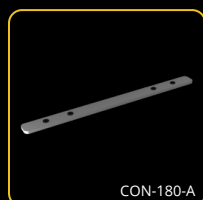
endings



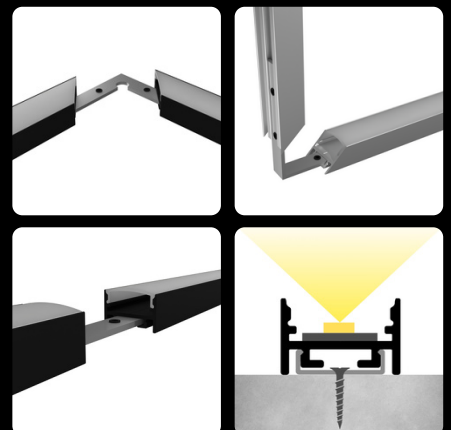
clips

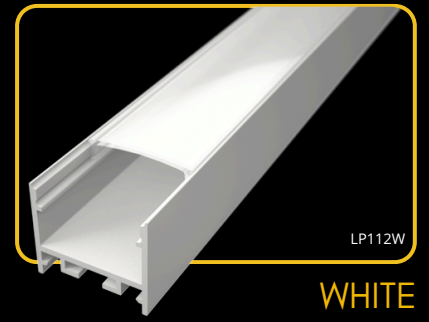


connectors

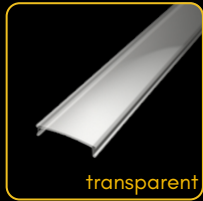


LED Profile SURFACE 11, a high-quality aluminium profile, perfect for LED strip installations. Choose from clear, milk, or black diffusers to create your desired lighting effect. The bottom section of the profile is designed for flexible connections, allowing for straight, corner, or 3D joining with connectors. Ideal for both professional and creative lighting projects, this profile offers a sophisticated solution for any space.





covers



2m LP-UNICOV2-MLK

LP-UNICOV2-TRA

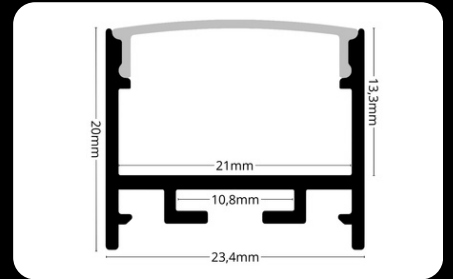
LP-UNICOV2-BLK

1m LP-UNICOV2-MLK-1m

LP-UNICOV2-TRA-1m

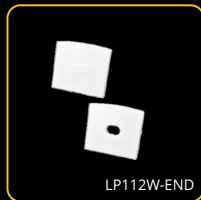
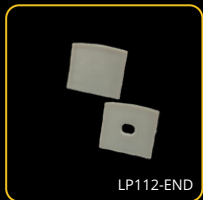
LP-UNICOV2-BLK-1m

20m LP-UNICOV2-MLK-20m

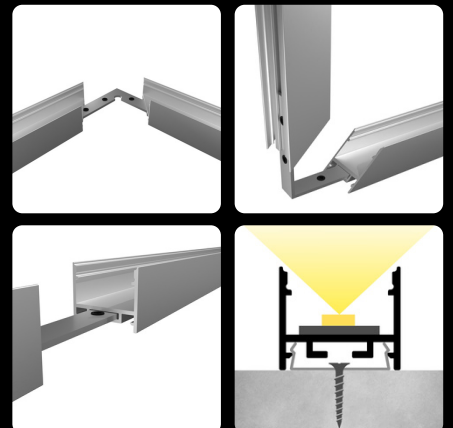


LED Profile SURFACE 12, a high-quality aluminium profile in a sleek finish, perfect for LED strip installations. Choose from clear, milk, or black diffusers to create your desired lighting effect. The bottom section of the profile is designed for flexible connections, allowing for straight, corner, or 3D joining with connectors. The profile can be mounted using clips into a plasterboard ceiling or wall, or it can be suspended using a wire system.

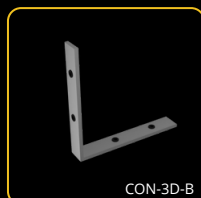
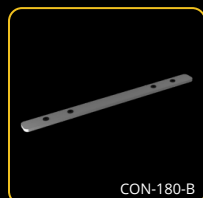
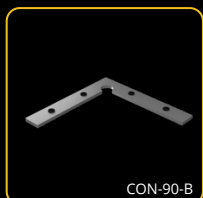
endings

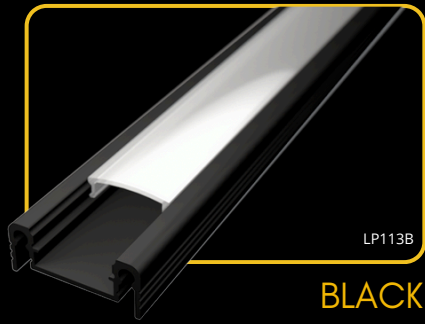


clips

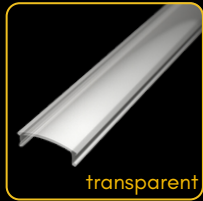


connectors





covers

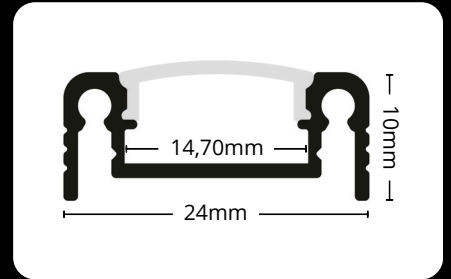


2m LP-UNICOV1-MLK
1m LP-UNICOV1-MLK-1m
20m LP-UNICOV1-MLK-20m

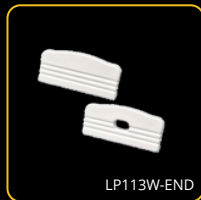
LP-UNICOV1-TRA
LP-UNICOV1-TRA-1m

LP-UNICOV1-BLK
LP-UNICOV1-BLK-1m

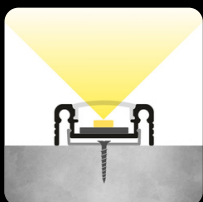
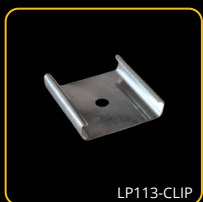
LP-UNICOV1-MLK-UV
LP-UNICOV1-MLK-1M-UV



endings



clips



LED Profile SURFACE 13 is a high-quality aluminium profile with a sleek finish, ideal for LED strip installations. Choose from clear, milk, or black diffusers to achieve your desired lighting effect. This profile can be mounted directly using clips that are hidden and concealed beneath the profile. Perfect for both professional and creative lighting projects, the SURFACE 13 profile offers a sophisticated solution for any space.



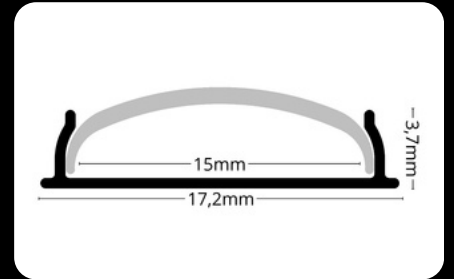


**BENDABLE
PROFILE**

covers



2m LP105-MILKC
1m LP105-MILKC-1m



endings



clips

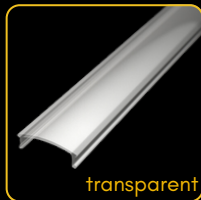


The **LED profile SURFACE 5** is a bendable surface-mounted aluminum profile, designed specifically for curved or uneven surfaces. Its bendable design allows for creative and versatile lighting applications. This profile comes exclusively with a milky diffuser, ensuring smooth and uniform light diffusion for a clean and modern look.





covers



2m LP-UNICOV1-MLK

LP-UNICOV1-TRA

LP-UNICOV1-BLK

LP-UNICOV1-MLK-UV

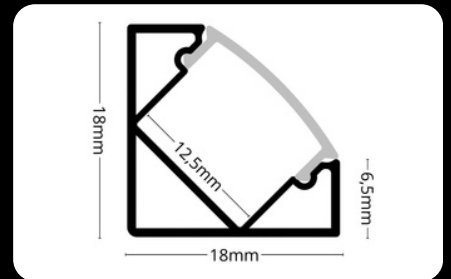
1m LP-UNICOV1-MLK-1m

LP-UNICOV1-TRA-1m

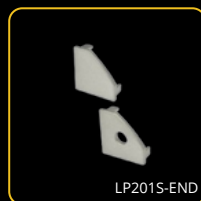
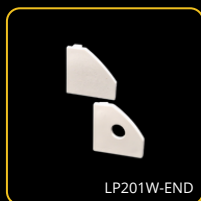
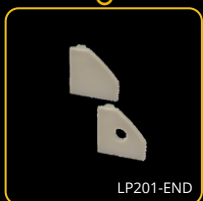
LP-UNICOV1-BLK-1m

LP-UNICOV1-MLK-1m-UV

20m LP-UNICOV1-MLK-20m



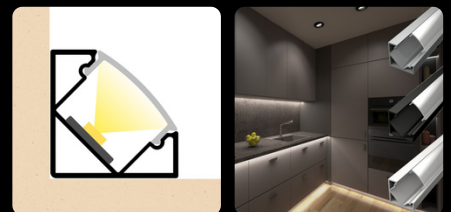
endings

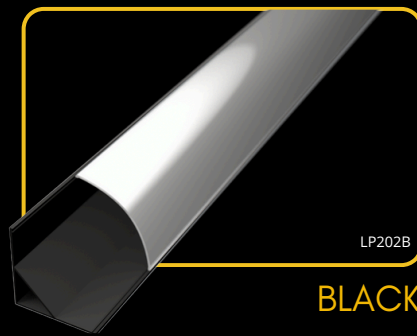


clips

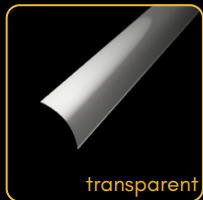


LED Profile CORNER 1 is a high-quality aluminum profile, perfect for LED strip installations with a 45° lighting angle. This profile enables elegant illumination of corners and edges, creating a unique lighting effect. You can choose from three types of diffusers – clear, milky, or black – to achieve the desired ambiance. Designed with a focus on functionality and aesthetics, it is suitable for both professional and creative lighting projects.





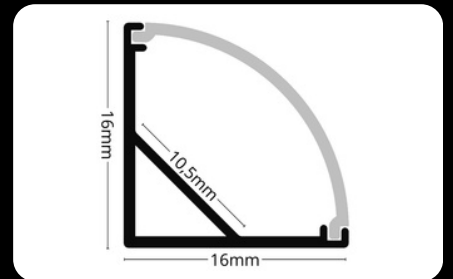
covers



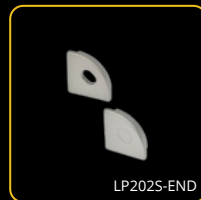
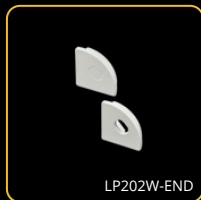
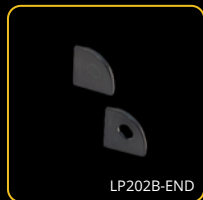
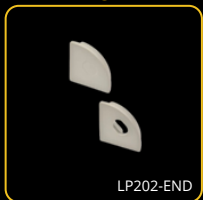
2m LP202-MILKC
1m LP202-MILKC-1m

LP202-TRANC
LP202-TRANC-1m

LP202-BLACKC
LP202-BLACKC-1m



endings



clips

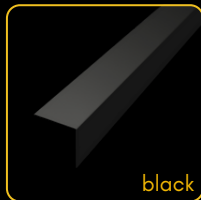
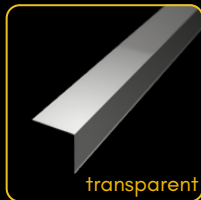


LED Profile CORNER 2 is a premium aluminum profile, ideal for LED strip installations with a 45° lighting angle. Featuring an arched diffuser, this profile ensures smooth and uniform light distribution, creating an elegant and soft lighting effect. Available with clear, milky, or black diffusers, it allows you to customize the lighting ambiance to suit your space.





covers

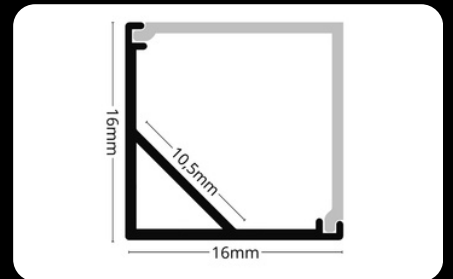


2m
1m

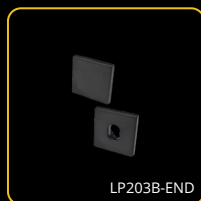
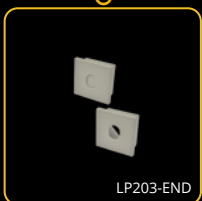
LP203-MILKC
LP203-MILKC-1m

LP203-TRANC
LP203-TRANC-1m

LP203-BLACKC
LP203-BLACKC-1m



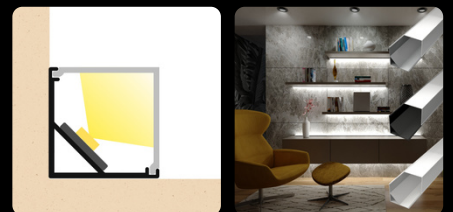
endings

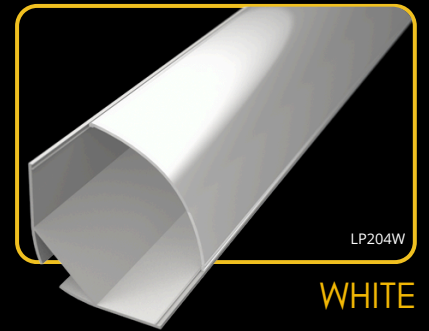
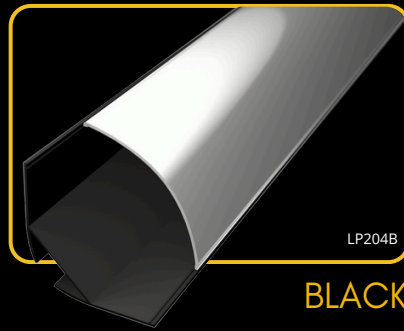


clips

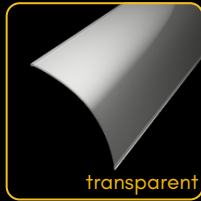


LED Profile CORNER 3 is a premium aluminum profile with a 45° lighting angle and a square diffuser for a modern, structured light effect. Available in clear, milky, or black, it offers flexibility to match any ambiance, combining functionality with bold, contemporary design. Perfect for accentuating architectural details, it brings a sleek and professional finish to any project.





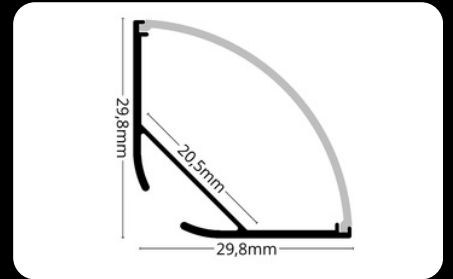
covers



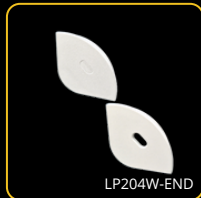
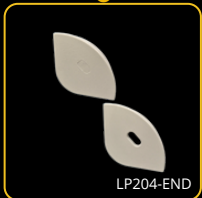
2m LP204-MILKC
1m LP204-MILKC-1m

LP204-TRANC
LP204-TRANC-1m

LP204-BLACKC
LP204-BLACKC-1m



endings

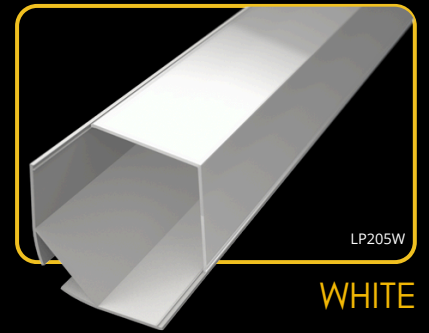
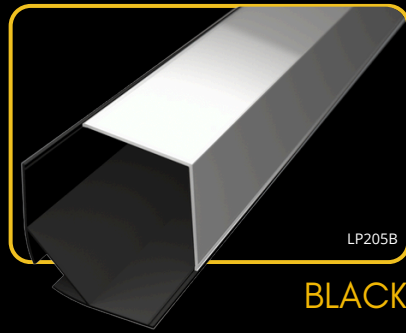


clips

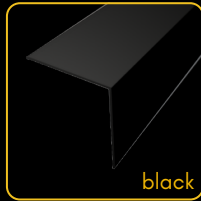
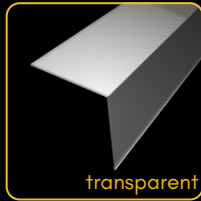


The **LED Profile CORNER 4** is a premium aluminum profile with a 45° lighting angle and a round diffuser for a modern, structured light effect. Designed to accommodate two LED strips side by side, it offers enhanced brightness and flexibility for diverse lighting projects. Available in clear, milky, or black diffusers, it seamlessly blends functionality with bold, contemporary design.

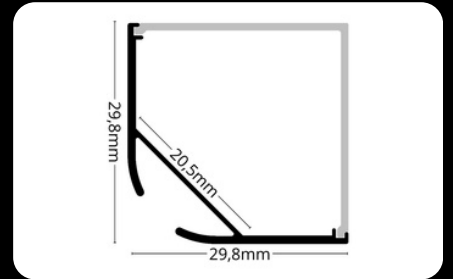




covers



2m	LP205-MILKC	LP205-TRANC	LP205-BLACKC
1m	LP205-MILKC-1m	LP205-TRANC-1m	LP205-BLACKC-1m



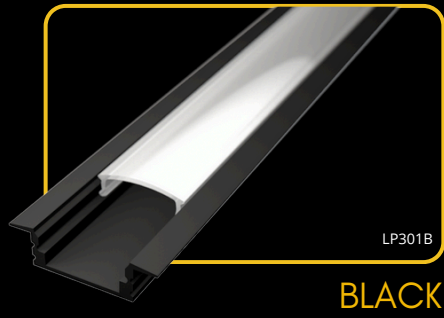
The **LED Profile CORNER 5** is a premium aluminum profile with a 45° lighting angle and a square diffuser for a bold, geometric light effect. Designed to accommodate two LED strips side by side, it ensures powerful illumination and versatility for a variety of lighting applications. Featuring a sharp-edged diffuser, it adds a modern, structured look to any space.

endings

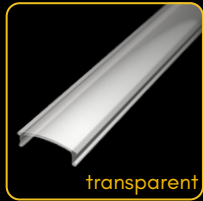


clips





covers



2m LP-UNICOV1-MLK

LP-UNICOV1-TRA

LP-UNICOV1-BLK

LP-UNICOV1-MLK-UV

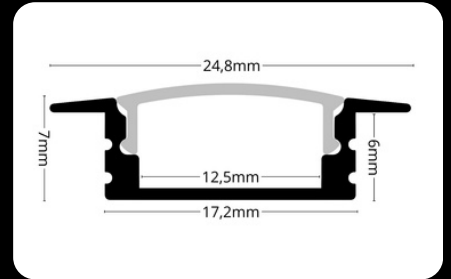
1m LP-UNICOV1-MLK-1m

LP-UNICOV1-TRA-1m

LP-UNICOV1-BLK-1m

LP-UNICOV1-MLK-1M-UV

20m LP-UNICOV1-MLK-20m



The **LED Profile RECESSED 1** is an aluminum profile for LED strips, designed for recessed installation into wood. It ensures seamless integration, efficient heat dissipation, and is compatible with clear, milky, or black diffusers for tailored lighting effects. Ideal for modern and functional lighting.

endings



clips



connectors

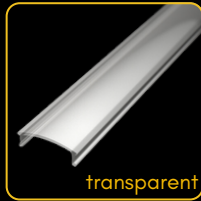


RECESSED PROFILES

LED PROFILE RECESSED 2



covers

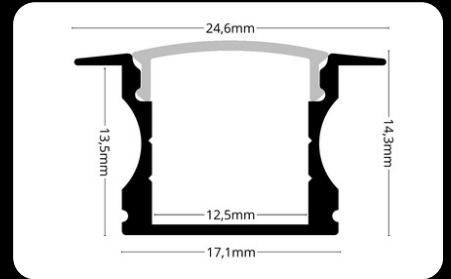


2m LP-UNICOV1-MLK
1m LP-UNICOV1-MLK-1m
20m LP-UNICOV1-MLK-20m

LP-UNICOV1-TRA
LP-UNICOV1-TRA-1m

LP-UNICOV1-BLK
LP-UNICOV1-BLK-1m

LP-UNICOV1-MLK-UV
LP-UNICOV1-MLK-1M-UV



The **LED Profile RECESSED 2** is an aluminum profile for LED strips, designed for recessed installation into wood or drywall. Its sleek design ensures a flush finish, while offering compatibility with clear, milky, or black diffusers for versatile lighting effects. Perfect for modern interiors.

endings



clips

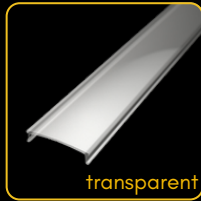


RECESSED PROFILES

LED PROFILE RECESSED 3



covers



2m LP-UNICOV2-MLK

LP-UNICOV2-TRA

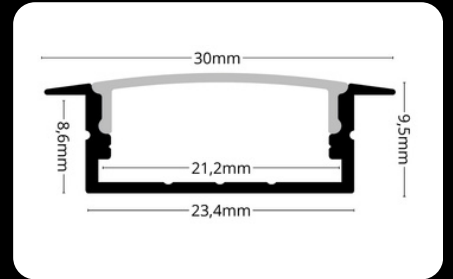
LP-UNICOV2-BLK

1m LP-UNICOV2-MLK-1m

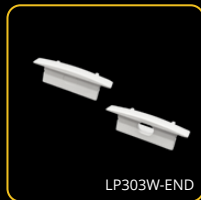
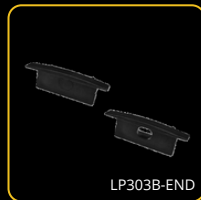
LP-UNICOV2-TRA-1m

LP-UNICOV2-BLK-1m

20m LP-UNICOV2-MLK-20m



endings



clips

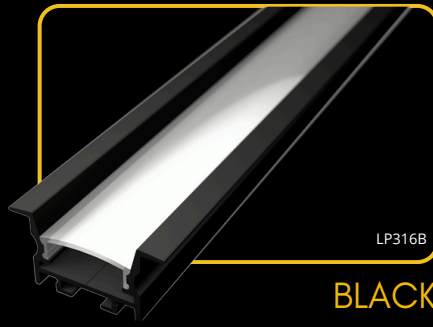


The **LED Profile RECESSED 3** is an aluminum profile for LED strips, designed for recessed installation into wood or drywall. Its wider diffuser allows for the installation of two LED strips side by side, offering enhanced lighting output and flexibility. With compatibility for clear, milky, or black diffusers, it provides versatile lighting effects and is ideal for modern interiors.

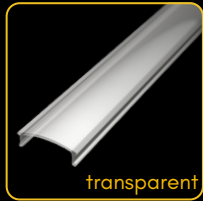


RECESSED PROFILES

LED PROFILE RECESSED 16



covers

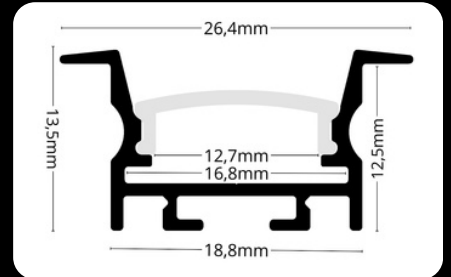


2m LP-UNICOV1-MLK
1m LP-UNICOV1-MLK-1m
20m LP-UNICOV1-MLK-20m

LP-UNICOV1-TRA
LP-UNICOV1-TRA-1m

LP-UNICOV1-BLK
LP-UNICOV1-BLK-1m

LP-UNICOV1-MLK-UV
LP-UNICOV1-MLK-1M-UV



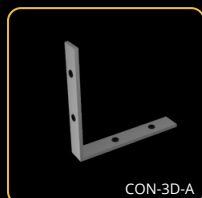
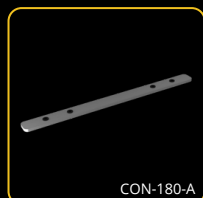
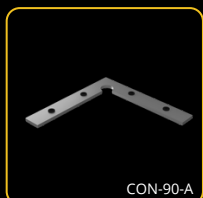
endings



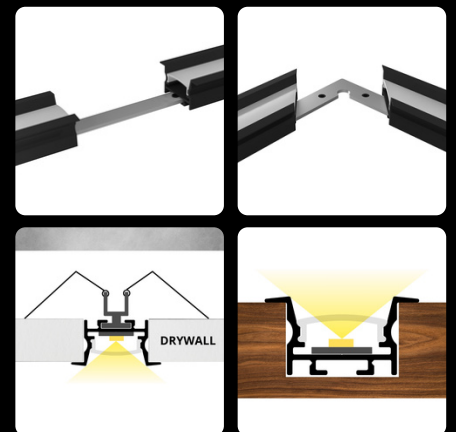
clips

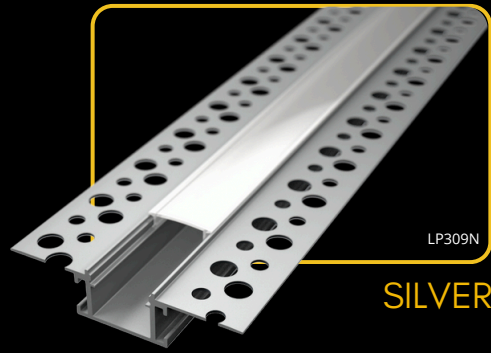


connectors

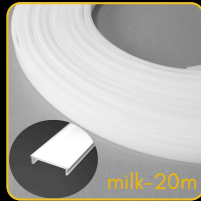
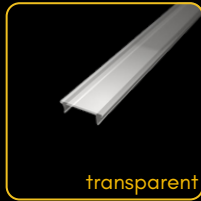


The **LED profile Recessed 16** is designed for recessed installation into wood or drywall, making it ideal for discreet lighting. Its key advantage is the diffuser integrated into the profile body, eliminating glare and providing soft, pleasant light. The Recessed 16 profile is perfect for modern interiors where aesthetics and functionality are key. This aluminum profile offers a professional, elegant lighting solution that enhances any space.





covers



2m LP-UNICOV3-MLK

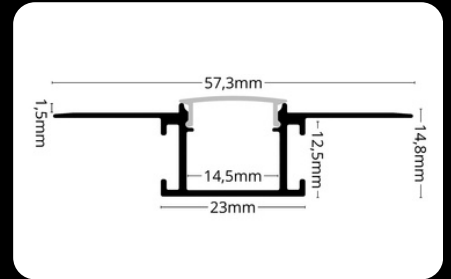
LP-UNICOV3-TRA

1m LP-UNICOV3-MLK-1m

LP-UNICOV3-TRA-1m

20m

LP-UNICOV3-MLK-20m

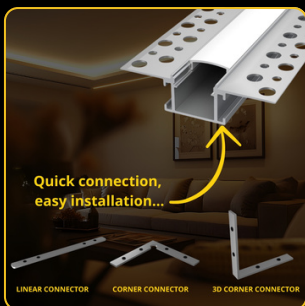
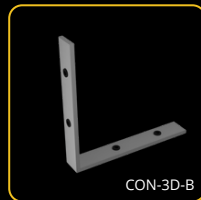
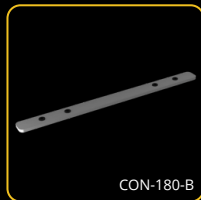
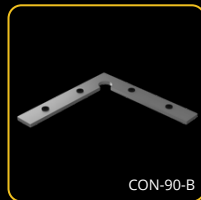


The **LED profile RECESSED 9** is a sophisticated aluminum profile crafted for seamless integration into drywall. Its sleek, minimalist aesthetic allows for an understated and refined installation of LED strips in walls or ceilings, creating smooth, consistent lighting without visual clutter. This profile supports three diffuser options: transparent, milky (available in 2m or 20m rolls), and black, ensuring customizable lighting effects to suit any setting.

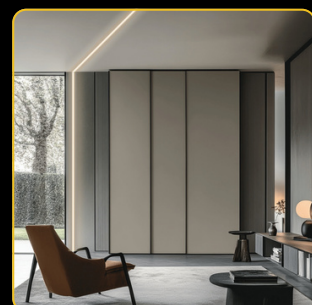
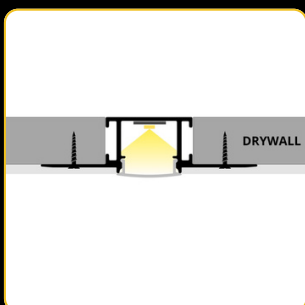
endings

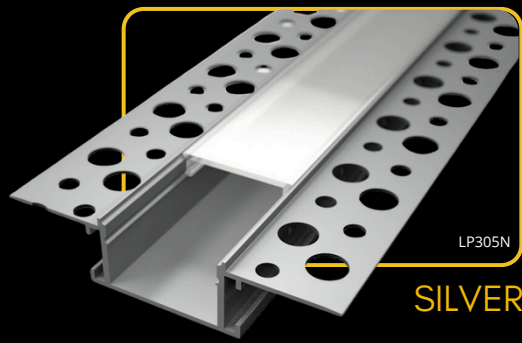


connectors



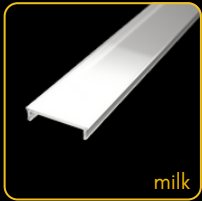
The profiles offer the flexibility of connecting with specialized connectors, available in straight, corner, and 3D configurations. These connectors enable seamless transitions between sections, ensuring a clean and professional installation in any layout.



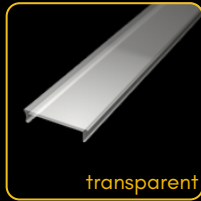


SILVER

covers



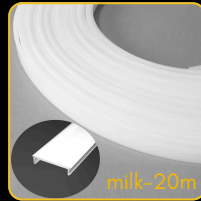
milky



transparent



black



milky-20m

2m LP305-MILKC

LP305-TRANC

LP305-BLACKC

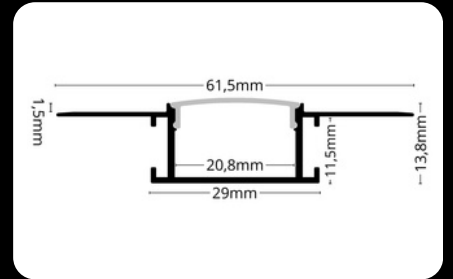
1m LP305-MILKC-1m

LP305-TRANC-1m

LP305-BLACKC-1m

20m

LP305-MILKC-20m



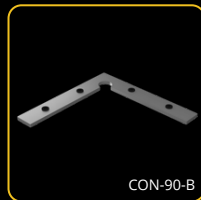
The **LED profile RECESSED 5** is an elegant aluminum profile designed to be recessed into drywall. Its modern and minimalist design ensures a clean and discreet installation of LED strips into walls or ceilings, providing uniform and pleasant lighting without any distracting elements. The profile is compatible with three types of diffusers: transparent, milky (2m or 20m reel), and black.

endings

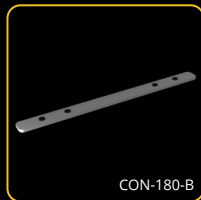


LP305N-END

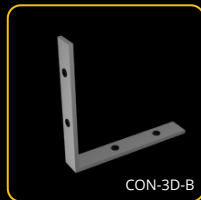
connectors



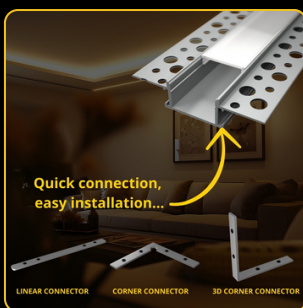
CON-90-B



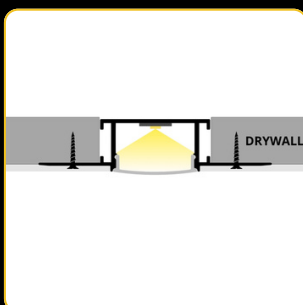
CON-180-B

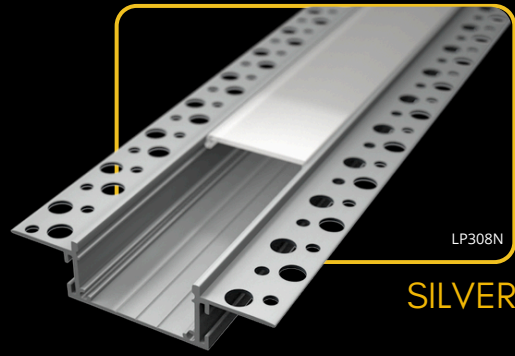


CON-3D-B

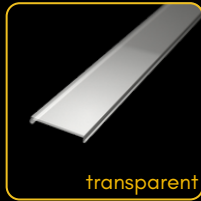


The profiles offer the flexibility of connecting with specialized connectors, available in straight, corner, and 3D configurations. These connectors enable seamless transitions between sections, ensuring a clean and professional installation in any layout.



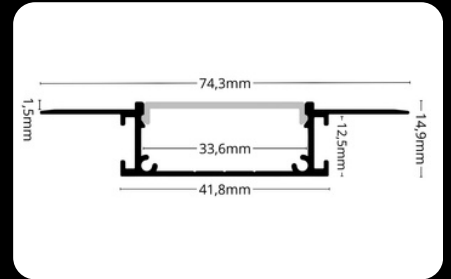


covers



2m LP308-MILKC
1m LP308-MILKC-1m

2m LP308-TRANC
1m LP308-TRANC-1m

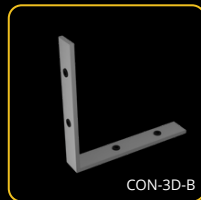
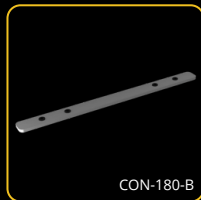
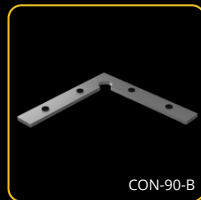


The **RECESSED 8 LED profile** is a wide aluminum profile designed for seamless integration into drywall. Its sleek, minimalist aesthetic allows for a refined installation of LED strips in walls or ceilings, delivering smooth and uniform lighting without unnecessary visual elements. This profile supports two diffuser options: transparent and milky, ensuring customizable lighting effects to suit any environment.

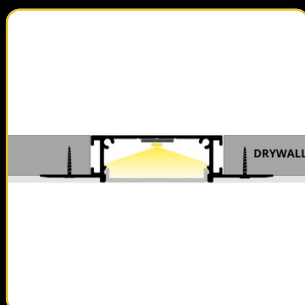
endings

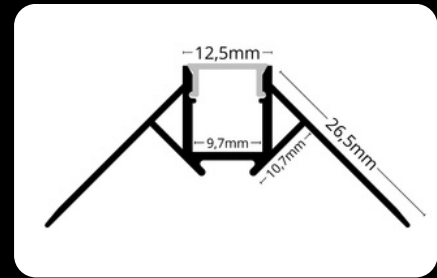
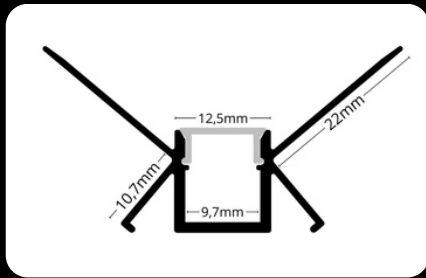


connectors



The profiles offer the flexibility of connecting with specialized connectors, available in straight, corner, and 3D configurations. These connectors enable seamless transitions between sections, ensuring a clean and professional installation in any layout.





The **LED profile RECESSED 10** is designed for installation into drywall and creates an inner corner. It provides elegant and discreet lighting, perfect for modern interiors. This profile is suitable for various applications where a clean and professional look with attention to detail is required.

The **LED profile RECESSED 11** is designed for installation into drywall and creates an external corner. It provides elegant and discreet lighting, perfect for modern interiors. This profile is ideal for applications requiring a clean and professional finish with a focus on detail.

covers



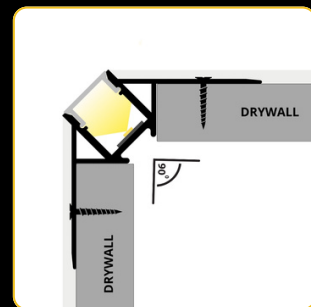
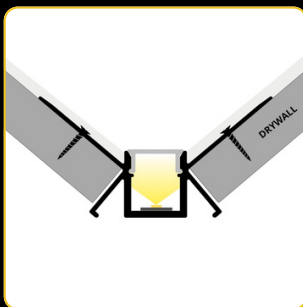
2m LP310-MILKC

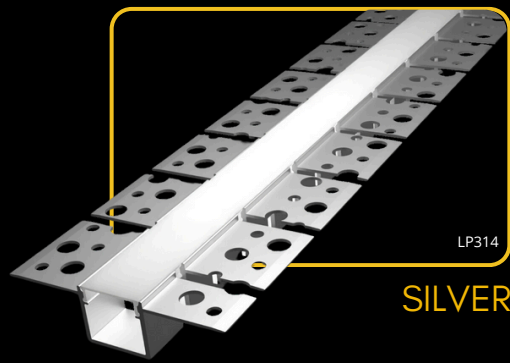
LP311-MILKC

1m LP310-MILKC-1m

LP311-MILKC-1m

endings



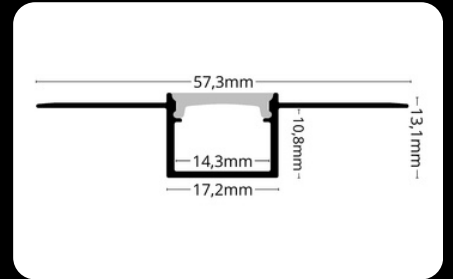
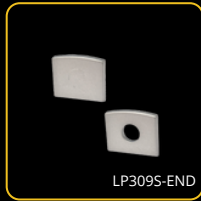


covers

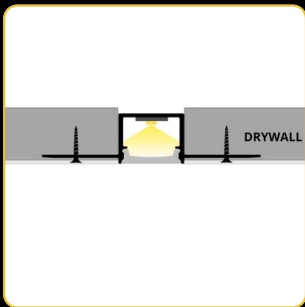


20m LP-UNICOV3-SILIC-20m
50m LP-UNICOV3-SILIC-50m

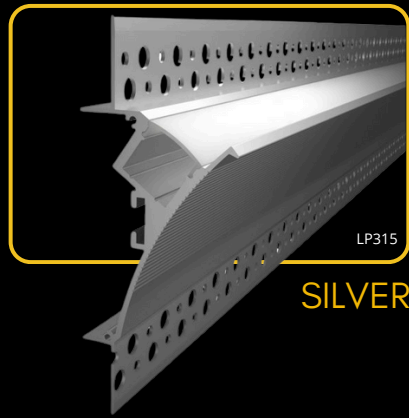
endings



Elevate the ambience of any space with Flexible **LED profile RECESSED 14**, expertly crafted for seamless integration into drywall ceilings and walls. This innovative profile is the perfect choice for bringing a touch of modern elegance to both residential and commercial environments, where design meets functionality.



**FLEXIBLE
PROFILE**

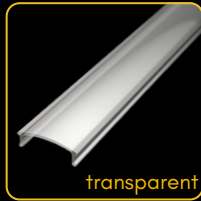


SILVER

covers



milk



transparent



black



milk

2m LP-UNICOV1-MLK

LP-UNICOV1-TRA

LP-UNICOV1-BLK

LP-UNICOV1-MLK-UV

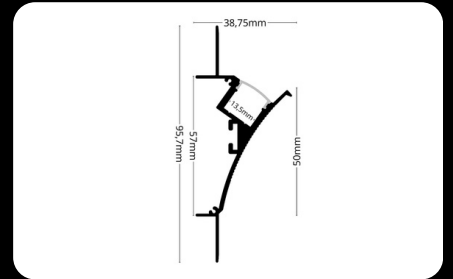
1m LP-UNICOV1-MLK-1m

LP-UNICOV1-TRA-1m

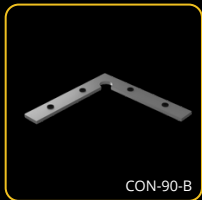
LP-UNICOV1-BLK-1m

LP-UNICOV1-MLK-1M-UV

20m LP-UNICOV1-MLK-20m



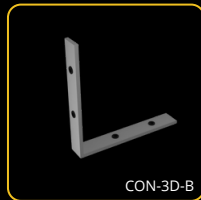
connectors



CON-90-B

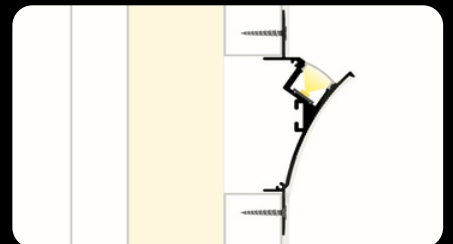


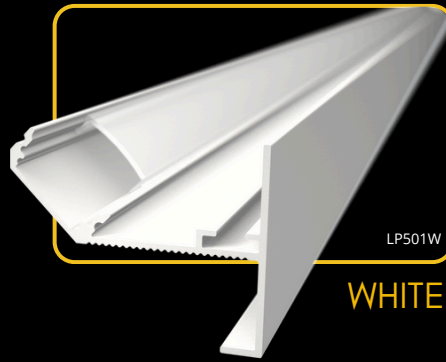
CON-180-B



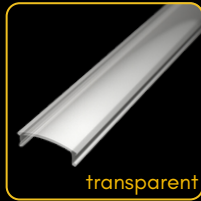
CON-3D-B

WALL LED profile RECESSED 15 is specially designed for the installation of LED strips to provide elegant and functional lighting for your spaces. This profile is made from high-quality anodized aluminum, ensuring long life and high corrosion resistance. The profile is intended to be embedded in drywall, allowing for discreet and clean installation. This method of installation is ideal for creating a minimalist look, where the light source is integrated directly into the wall without any distracting elements.





covers



2m LP-UNICOV1-MLK

LP-UNICOV1-TRA

LP-UNICOV1-BLK

LP-UNICOV1-MLK-UV

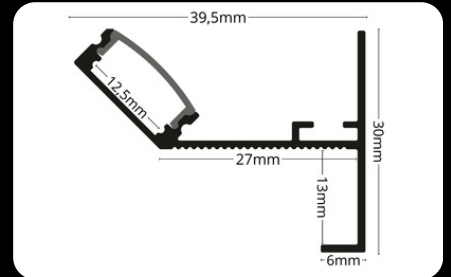
1m LP-UNICOV1-MLK-1m

LP-UNICOV1-TRA-1m

LP-UNICOV1-BLK-1m

LP-UNICOV1-MLK-1M-UV

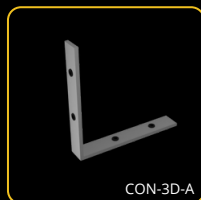
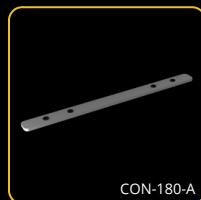
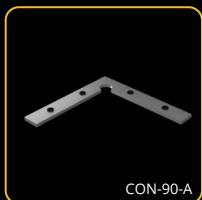
20m LP-UNICOV1-MLK-20m



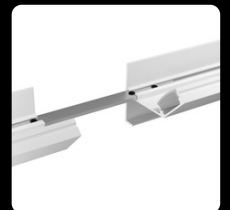
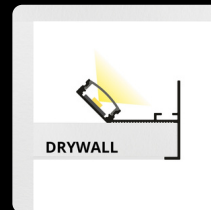
endings



connectors

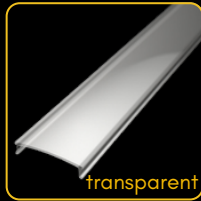


The **LED profile CEIL-EDGE** is designed for installation into drywall ceilings, forming the front edge. It's ideal for seamless lighting, blending easily into modern interiors. With durable aluminum construction and LED strip compatibility, it combines aesthetics and function. The integrated diffuser reduces glare, ensuring smooth, even lighting, perfect for spaces needing soft, elegant illumination. This profile offers a professional, refined look to enhance any space.





covers



2m LP-UNICOV2-MLK

LP-UNICOV2-TRA

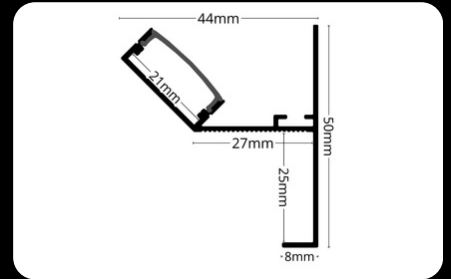
LP-UNICOV2-BLK

1m LP-UNICOV2-MLK-1m

LP-UNICOV2-TRA-1m

LP-UNICOV2-BLK-1m

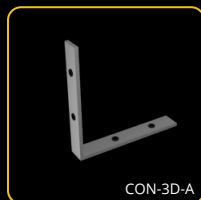
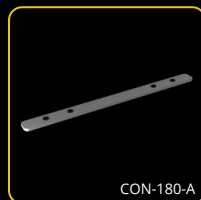
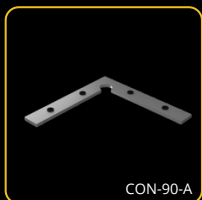
20m LP-UNICOV2-MLK-20m



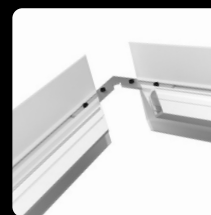
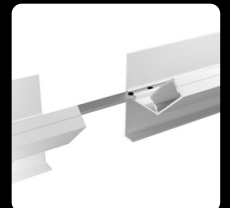
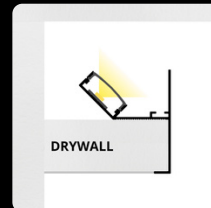
endings



connectors



The **LED profile CEIL-EDGE MAXI** is designed for installation into drywall ceilings, forming the front edge. It's ideal for seamless lighting, blending easily into modern interiors. With durable aluminum construction and LED strip compatibility, it combines aesthetics and function. The profile is spacious enough to accommodate two LED strips side by side, allowing for enhanced brightness and lighting flexibility. The integrated diffuser reduces glare, ensuring smooth, even lighting, perfect for spaces needing soft, elegant illumination.

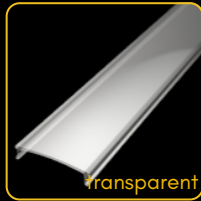




covers



milky



transparent



black

2m LP-UNICOV2-MLK

LP-UNICOV2-TRA

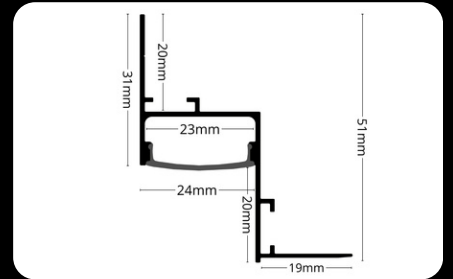
LP-UNICOV2-BLK

1m LP-UNICOV2-MLK-1m

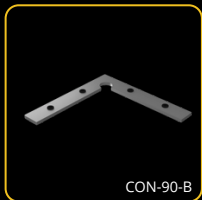
LP-UNICOV2-TRA-1m

LP-UNICOV2-BLK-1m

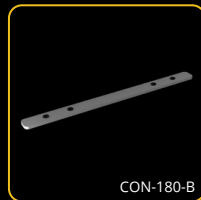
20m LP-UNICOV2-MLK-20m



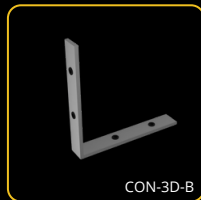
connectors



CON-90-B

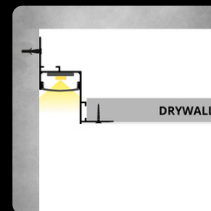


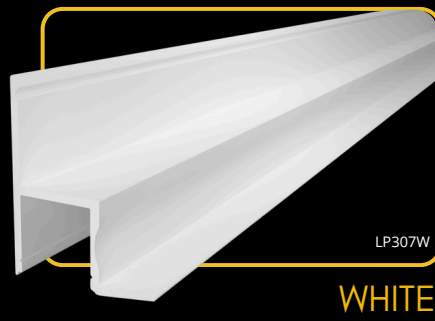
CON-180-B



CON-3D-B

The **LED profile WALL-GLOW** is the ideal choice for those seeking sophisticated, invisible lighting that subtly frames the space. This aluminum profile, designed for side mounting, allows for drywall attachment, creating a recessed lighting effect around the room's perimeter. It accommodates LED strips up to 23 mm in width and includes an optional snap-in diffuser – available in transparent, milky, or black – for a customized lighting style. Connector clips make it easy to join profiles in straight lines or corners, ensuring a seamless and integrated design. WALL-GLOW is perfect for modern, minimalist interiors that emphasize subtle, discreet lighting.





WHITE

covers



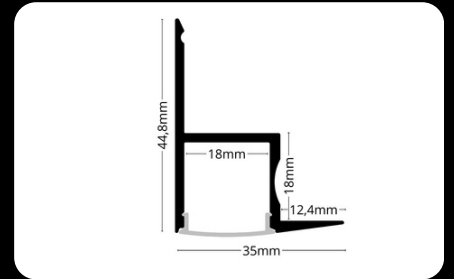
2m LP307-MILKC

1m LP307-MILKC-1m

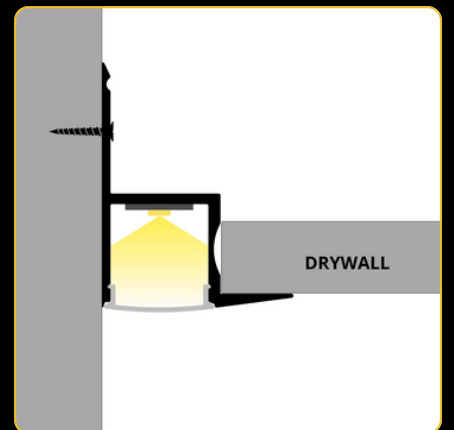
endings

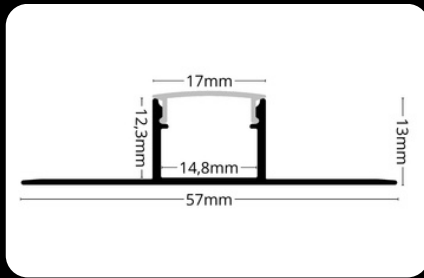
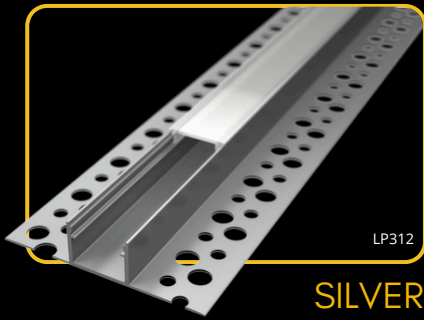


LP307W-END

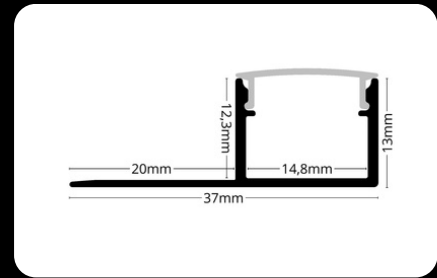


The **LED profile RECESSED 7** is designed to create indirect wall lighting. It is installed between the wall and the drywall ceiling, providing a modern and elegant lighting effect. This profile is ideal for achieving stylish ambient lighting in residential and commercial spaces.



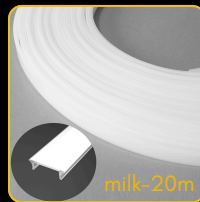
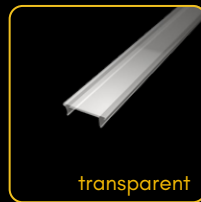


The **LED profile RECESSED 12** is specifically designed for LED strips and intended for recessed installation under tiles. It provides elegant and discreet lighting that seamlessly integrates into modern interiors. This profile is ideal for use in bathrooms, kitchens, or other spaces where a clean and professional look is desired.



The **LED profile RECESSED 13** is specifically designed for LED strips and serves as an end profile for recessed installation under tiles. It provides elegant and discreet lighting while ensuring a clean and professional finish. Perfect for bathrooms, kitchens, and other spaces requiring a polished and modern appearance.

covers



endings



2m LP-UNICOV3-MLK

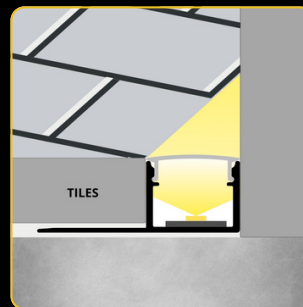
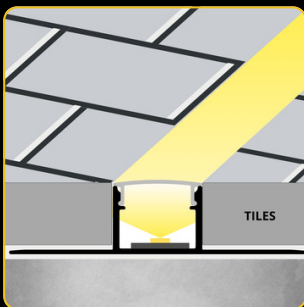
LP-UNICOV3-TRA

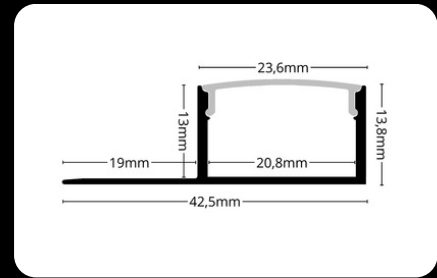
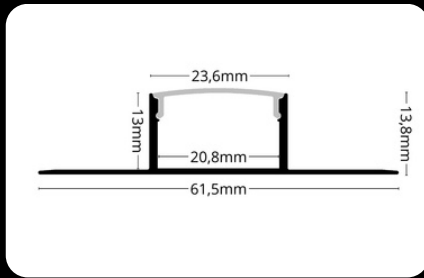
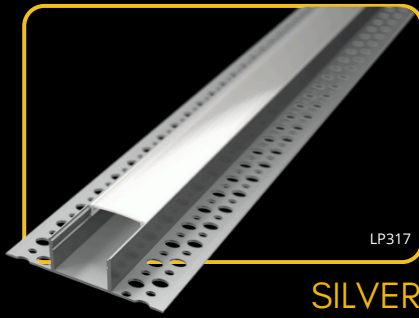
1m LP-UNICOV3-MLK-1m

LP-UNICOV3-TRA-1m

20m

LP-UNICOV3-MLK-20m

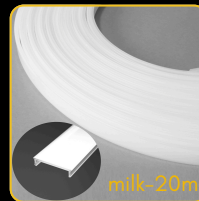
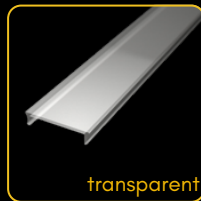




The **LED profile RECESSED 17** is specifically designed for LED strips and intended for recessed installation under tiles. It provides elegant and discreet lighting that seamlessly integrates into modern interiors. This profile is ideal for use in bathrooms, kitchens, or other spaces where a clean and professional look is desired.

The **LED profile RECESSED 18** is specifically designed for LED strips and serves as an end profile for recessed installation under tiles. It provides elegant and discreet lighting while ensuring a clean and professional finish. Perfect for bathrooms, kitchens, and other spaces requiring a polished and modern appearance.

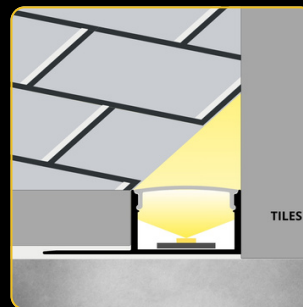
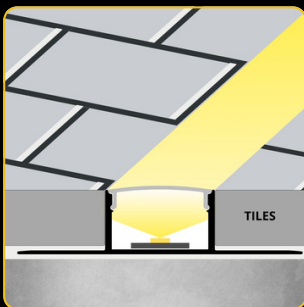
covers



endings



2m	LP305-MILKC	LP305-TRANC	LP305-BLACKC	
1m	LP305-MILKC-1m	LP305-TRANC-1m	LP305-BLACKC-1m	
20m				LP305-MILKC-20m





covers

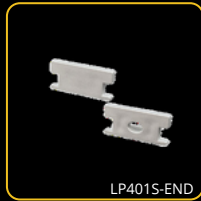


2m LP401-MILKC
1m LP401-MILKC-1m

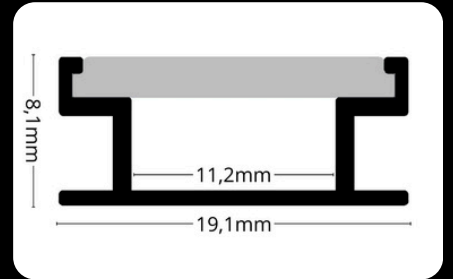
endings



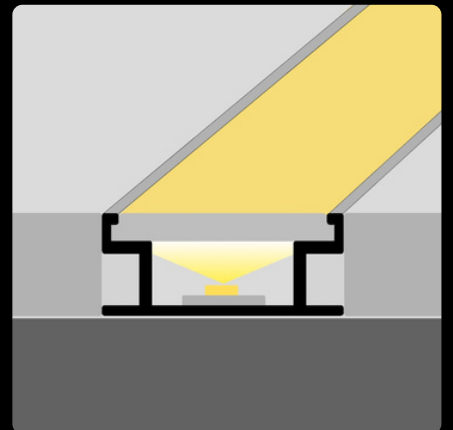
LP401-END



LP401S-END



The **LED profile FLOOR 4** is designed for seamless floor integration, offering a modern, stylish lighting solution. Crafted from durable aluminum, it withstands foot traffic, making it ideal for both residential and commercial areas. The milky diffuser softens LED light, providing smooth, glare-free illumination that enhances ambiance without overpowering. FLOOR 4 blends effortlessly with flooring, creating a subtle, sophisticated lighting effect that adds depth and elegance to any space.





covers

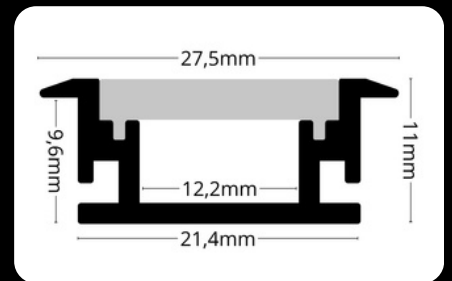


2m LP404-MILKC
1m LP404-MILKC-1m

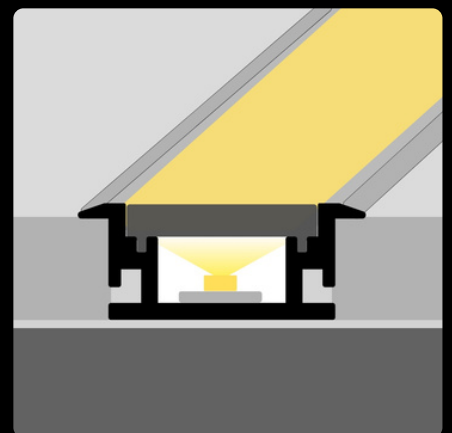
endings

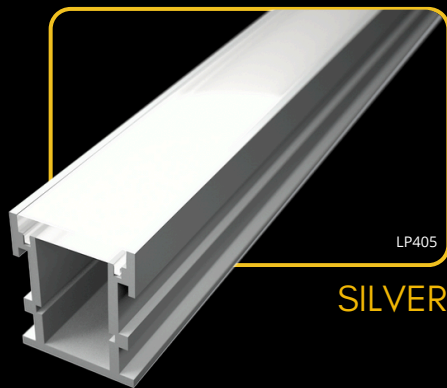


LP404-END



The **LED profile FLOOR 4** is specifically designed for seamless integration into floors, providing a sleek and contemporary lighting solution. Made from robust aluminum, it is built to endure foot traffic, making it perfect for use in both residential and commercial settings. The milky diffuser gently softens the LED light, delivering smooth and glare-free illumination that enhances the atmosphere without being intrusive. FLOOR 4 harmonizes effortlessly with flooring, creating a refined and understated lighting effect that adds depth and sophistication to any environment.



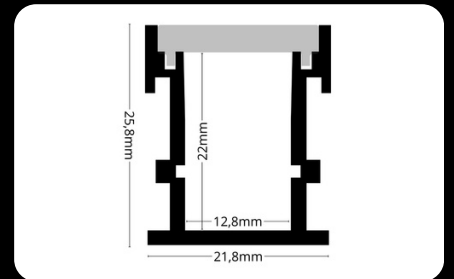
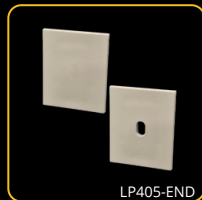


covers

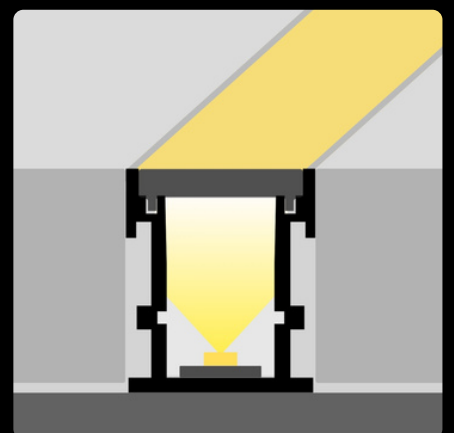


2m LP405-MILKC
1m LP405-MILKC-1m

endings



The **LED profile FLOOR 5** is designed for recessed installation into floors, offering a sleek and modern lighting solution. Its sturdy aluminum construction ensures durability, making it ideal for areas with foot traffic. The profile is equipped with a milky diffuser that softens the light, providing smooth, even illumination without glare. This profile blends seamlessly into flooring, creating a refined, integrated lighting effect.





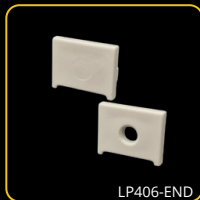
SILVER

covers



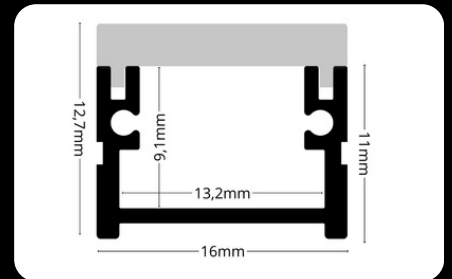
milk

endings

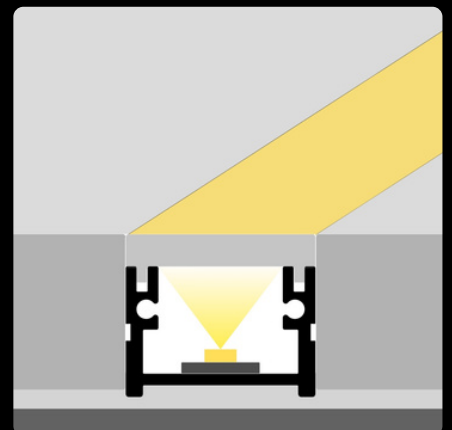


LP406-END

2m LP406-MILK
1m LP406-MILK-1m



The **LED profile FLOOR 6** is crafted for recessed floor installation, delivering a modern and streamlined lighting solution. Built from durable aluminum, it is designed to withstand foot traffic, ensuring long-lasting performance. The milky diffuser gently diffuses the light, offering smooth and uniform illumination without glare. Seamlessly integrating into flooring, this profile creates an elegant and cohesive lighting effect that enhances the overall aesthetic of any space.

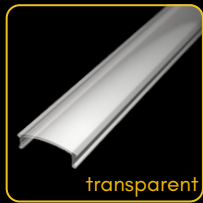


WALL PROFILES

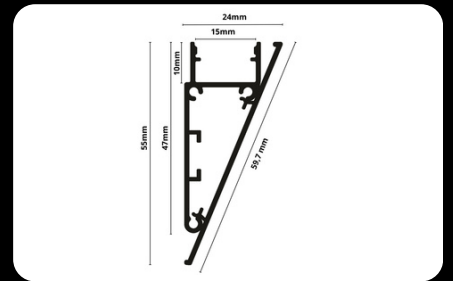
LED PROFILE WALL



covers



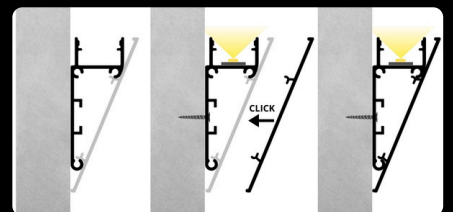
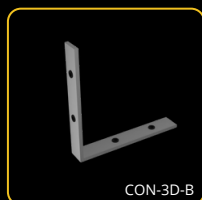
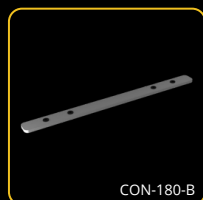
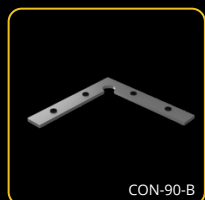
2m	LP-UNICOV1-MLK	LP-UNICOV1-TRA	LP-UNICOV1-BLK	LP-UNICOV1-MLK-UV
1m	LP-UNICOV1-MLK-1m	LP-UNICOV1-TRA-1m	LP-UNICOV1-BLK-1m	LP-UNICOV1-MLK-1M-UV
20m	LP-UNICOV1-MLK-20m			



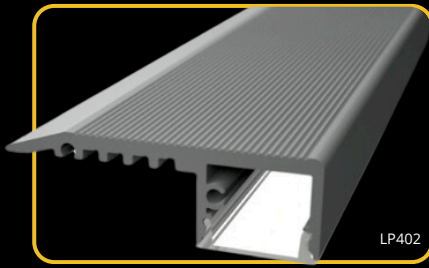
endings



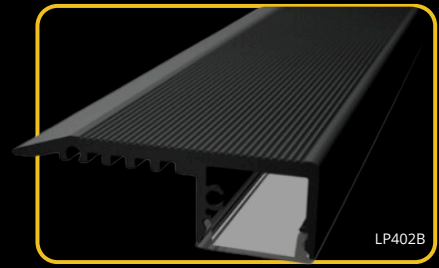
connectors



The **LED profile WALL** is an aluminum profile designed for wall-mounted LED strips. Ideal for ceiling or wall lighting, it enhances any space with modern aesthetics. This profile is compatible with both milk and transparent diffusers, offering versatile lighting options. Perfect for efficient and stylish illumination in residential or commercial settings.



SILVER

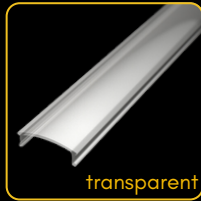


BLACK

covers



milk



transparent



black



milk

2m LP-UNICOV1-MLK

LP-UNICOV1-TRA

LP-UNICOV1-BLK

LP-UNICOV1-MLK-UV

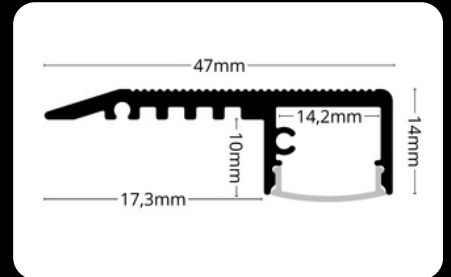
1m LP-UNICOV1-MLK-1m

LP-UNICOV1-TRA-1m

LP-UNICOV1-BLK-1m

LP-UNICOV1-MLK-1M-UV

20m LP-UNICOV1-MLK-20m



endings



LP402S-END



LP402B-END

LED profile STAIRS is a stylish and practical aluminum profile that offers an ideal solution for illuminating stairs with LED strips in both indoor and outdoor settings. Thanks to its sophisticated design, it easily integrates into any environment while providing sufficient light for safe stair use. The profile is made from durable aluminum, ensuring a long service life and sturdy construction. The combination of functionality and modern aesthetics makes it an excellent choice for anyone seeking a reliable and elegant stair lighting solution.

